

LED Sea-Vue® Light Instructions
12 & 24 Volt

IMPORTANT SAFETY INSTRUCTIONS

SAVE THESE INSTRUCTIONS: This manual contains important safety and operating instructions for Sea-Vue Underwater LED lights. **CAREFULLY READ THESE INSTRUCTIONS BEFORE INSTALLING OR USING PRODUCT.**

GENERAL PRECAUTIONS

WARNING

Battery posts, terminals and related accessories contain lead and lead components, and other chemicals known to the State of California to cause cancer and birth defects or other reproductive harm. Always wash your hands after handling these devices.

WARNING

Do not operate the Sea-Vue Lights with damaged power cables - Replace damaged product immediately.

WARNING

VOLTAGE COMPATIBILITY: NEVER use the Sea-Vue Lights power supply (if used) unless the input voltage matches the Input voltage rating of the power supply. For example, do not use a 12-volt power supply with a 24-volt system.

MOUNTING LOCATIONS: The Sea-Vue Lights LED lights must be mounted at least 6" below the water line or on a dock as a dock light 6" below the low tide waterline. The power supply (if used) should be mounted in a location with plenty of ventilation that is not likely to experience water submersion.

! WARNING

EXCESSIVE MOISTURE: Do not electrical connections to direct water contact or submersion.

LOCATION OF POWER CABLES: Make sure all electric power cables are located so that they cannot be stepped on, tripped over, chafed or otherwise be subjected to damage or stress.

! WARNING

ELECTRIC SPARK & OPEN FLAME: NEVER smoke or allow a source of electric spark or open flame in the vicinity of batteries or in engine bay.

! WARNING

AC WIRING: All AC wiring should be completed by a certified electrician. AC power supplies are available for dock lighting, require 14 AWG wire, and are IP67 (temporary submersion less than 1m).

OVER TEMPERATURE PROTECTION: Sea-View Lights are equipped with an over temperature protection circuit that will dim the lights if they inadvertently over heat. Ensure the lens and backing plate are kept clean at all times. Failing to do so will result in excessive heat build up and poor light performance. Do not use abrasive or sharp objects to clean the housings and glass lens.

TROUBLESHOOTING CHECK LIST:

- 1. LIGHT DOES NOT TURN ON:** The input connections may be faulty or battery voltage is below 8.0 volts. Check all connections and verify voltage matches input requirement.
- 2. LIGHT TURNS ON MOMENTARILY THEN OFF:** The wire used to wire the lights may be inadequate or the battery voltage may be under 12 volts (50% discharged). If the input voltage is greater than 12 volts the wire gauge may be insufficient. While monitoring power supply input voltage, switch the lights on, if voltage drops below 8.0 volts the cables used are too small or there are bad connections. Check all connections and/or replace wiring with a larger gauge wire.
- 3. LIGHT FLICKERS ON AND OFF:** The connections to the fuse panel, battery, power supply, or LED light may be intermittent, check all connections.
- 4. LIGHT DIMS:** Light is overheating. Make sure the backplate and lens are clean and clear of debris for cooling.

SPECIFICATION SUMMARY:

Technical Specifications (DC)	
DC Input Voltage	10.0 - 30 VDC
DC Input Current (Maximum)	3.2A @ 12v / 1.6A @ 24v

Technical Specifications (AC power supply)	
AC Input Voltage, Frequency	47 - 63 Hz
AC Input Current (Maximum)	1.2A/115VAC
DC Output Voltage	15 Volts
DC Output Current	0 - 4 Amps
Rated Power	60 Watt
AC dock light power supplies are IP67 rated.	
Maximum Operating Temperature 50 °C / 122 °F Typical	

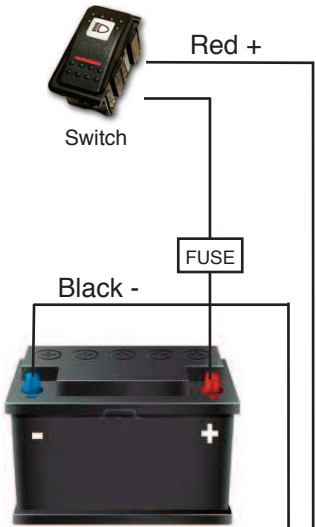
Wire Size Recommendations

Conductor Sizes (AWG) for 3% Voltage Drop

Length of conductor from source of current to the product and back to the source - in feet

Total Current on Circuit	10'	15'	20'	25'	30'	40'	50'	60'
5 amps	18	16	14	12	12	10	10	10
10 amps	14	12	10	10	10	8	6	6
15 amps	12	10	10	10	10	6	6	6
20 amps	10	10	8	6	6	6	4	4
				24v				
5 amps	18	18	18	16	16	14	12	12
10 amps	18	16	14	12	12	10	10	10
15 amps	18	14	12	12	10	10	8	8
20 amps	14	12	10	10	10	8	6	6

DC Lighting Wire Diagram



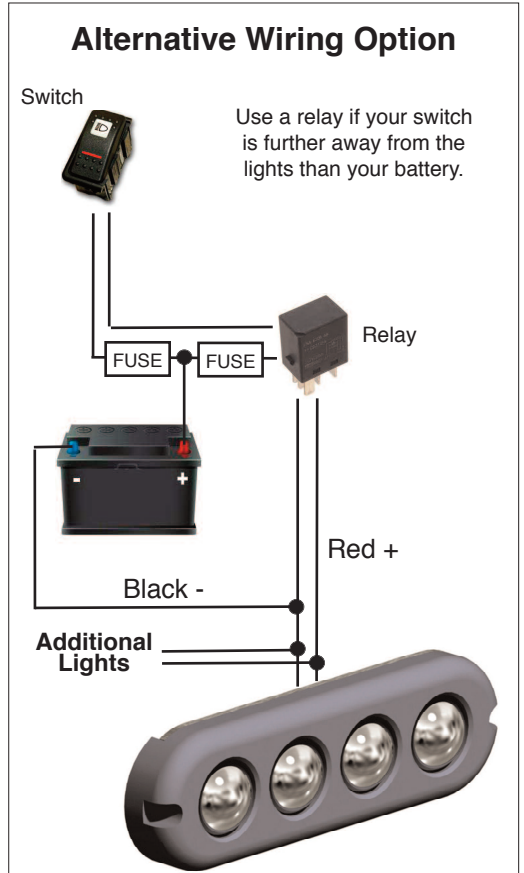
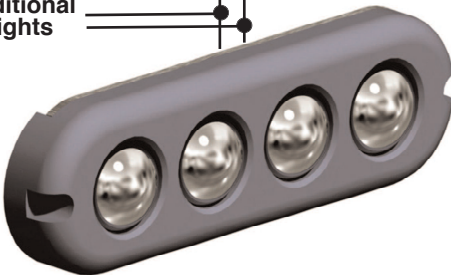
Fuses should be as close to battery as possible.

Use proper gauge & rating wire.

Use appropriate fuses for associated wire gauges.

Use waterproof heat-shrink on wire junctions.

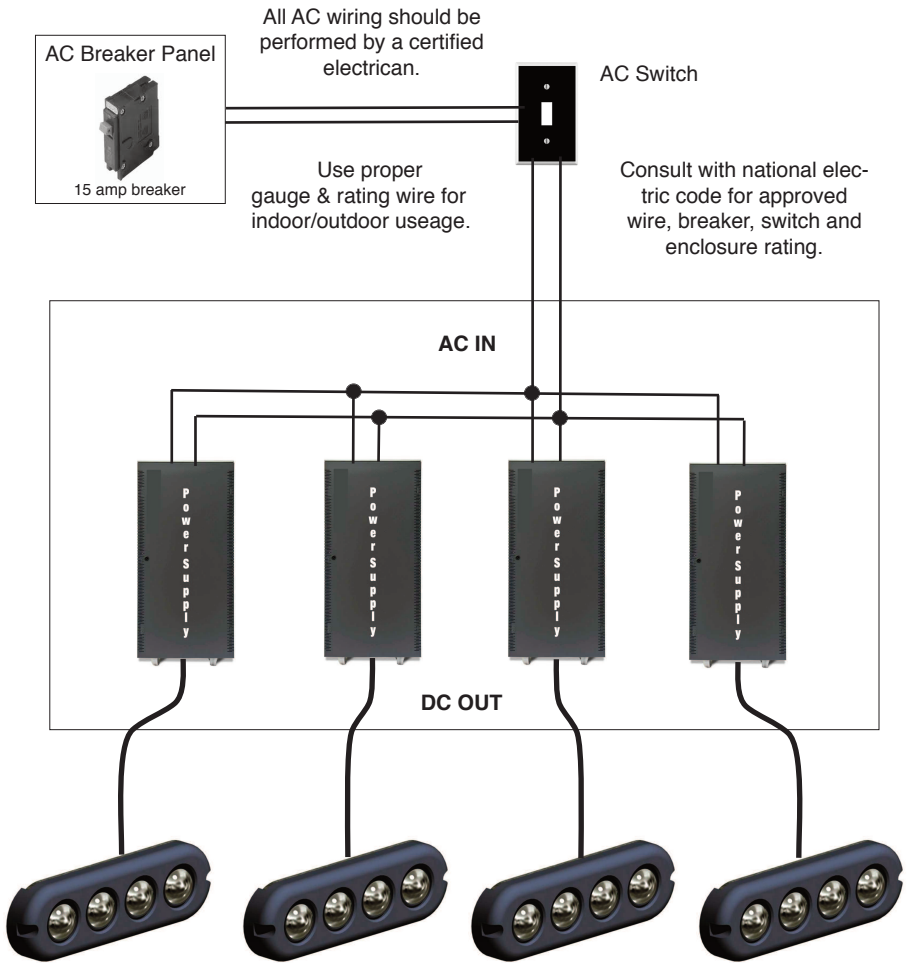
Additional Lights



For Hurley Marine switches, remotes, and relays, always refer to their respective wiring instructions.

- **Hurley Relay Diagram:** <http://hurleymarine.com/Relay-Diagram-WEB.pdf>
- **Hurley Remote Control / Relay Instructions:** <http://hurleymarine.com/Remote-Relay-Diagram.pdf>
- **Hurley Switch / Relay Instructions:** http://hurleymarine.com/Switch_w-Light_Relay.pdf

AC Lighting Wire Diagram



- Mount power supplies and AC junctions inside a NEMA Type 6, IP67, or equivalent enclosure.
- Use waterproof heat-shrink on all outdoor wire junctions.
- Mount light at least 6" below the low tide waterline.

Vessel Installation Instructions:

- Select a mounting location best suited to your particular needs. *For underwater use only!*
- Surface Mounting: Mark the position. It is good practice to use tape on the surface to be drilled then drill the hole through the tape. This will avoid scratching/chipping of the surrounding surface. Mount light at least 6" below the waterline.
- After drilling the holes apply a marine grade sealant, 3M 5200 is recommended, in the holes to ensure it is completely sealed against the ingress of moisture between lamination. Attach light and allow sealant to cure.
- Fit wiring: Before proceeding to drill the above waterline wire holes, check carefully to ensure that it will not affect the operation of other equipment in close proximity, nor compromise the integrity of the structure.
- Use either cable clams or apply a marine grade sealant to fill the holes to ensure it is completely sealed against water intrusion.
- Use wire ties to ensure cables will not chafe or kink. Wire loom can be used for barnacle protection.
- All wiring must be carried out by a suitably trained/qualified electrician using ABYC guidelines. With low voltage DC wiring the risk of fire may be present if wiring is not correctly installed.
- Ensure power supply wiring is of the correct size for the current draw. *Ensure wire harness will not chafe.*
- Use only approved marine grade water-tight connectors and wire. All joints must be soldered and sealed with a proprietary compound filled heat shrink tube.
- Ensure electrical supply has suitably sized fuse or other protective device to provide adequate protection of wiring and connected equipment in the event of circuit fault or short circuit.
- Dismantling of this product voids warranty.
- Do not use as a step.

Hint: Spraying lights with Silicone or putting a thin layer of Petroleum Jelly on annually will help keep algae, mussels, barnacles, etc. off.

LIMITED WARRANTY AND LIMITATION OF LIABILITY

All new products manufactured and marketed under Hurley Marine, Inc., are warranted to be free from defects in material and workmanship under normal and proper use for a period of (1) one year from date of shipment from Hurley Marine, Inc. No claim for breach of warranty will be allowed unless the material or workmanship is found defective within the warranty period, properly documented by buyer and Hurley Marine, Inc. is notified in writing within 10 days from failure. This warranty shall not apply to products that have been disassembled, altered, or utilized in a manner not approved by Hurley Marine, Inc. or subjected to abuse, misuse, improper maintenance, negligence or accident.

CUSTOMER AGREES THAT USE OF THE PRODUCT/SERVICE IS ENTIRELY AT CUSTOMER'S OWN RISK. THE FOREGOING WARRANTIES ARE EXCLUSIVE AND ARE ACCEPTED BY BUYER IN LIEU OF ANY AND ALL OTHER WARRANTIES, EXPRESSED OR IMPLIED, INCLUDING WITHOUT LIMITATION THE IMPLIED WARRANTIES OF MERCHANTABILITY OR FITNESS FOR PARTICULAR PURPOSE. Buyer's sole remedy in the event of a breach of the foregoing warranties is the repair or replacement of the affected product by Hurley Marine, Inc., upon the return of the product transportation charges prepaid to Hurley Marine, Inc., and after a charge to buyer for the use of the product prior to its return. BUYER AGREES THAT IN NO EVENT WILL HURLEY MARINE, INC.'S LIABILITY FOR ALL LOSSES FROM ANY CAUSE, WHETHER BASED ON CONTRACT, NEGLIGENCE, STRICT LIABILITY, OTHER TORT OR OTHERWISE, EXCEED BUYER'S NET PURCHASE PRICE, NOR WILL HURLEY MARINE, INC. BE LIABLE FOR ANY SPECIAL, INCIDENTAL CONSEQUENTIAL OR EXEMPLARY DAMAGES.

Under no circumstances is Hurley Marine, Inc. responsible for reimbursement of expenses related to vessel haul-outs, technician or yard personnel, travel expenses, yacht storage, labor performed during removal and/or replacement of fixture(s), or shipping costs for replacement parts. These are assumed liabilities of the customer and part of the terms of sale between Hurley Marine, Inc. and its customer.

The foregoing warranties will continue in effect for so long as the product is serviced and maintained in accordance with Hurley Marine, Inc. instructions and with genuine Hurley Marine, Inc. manufactured replacement parts. These warranties may not be altered or amended except by a written instrument signed by buyer and a duly authorized officer of Hurley Marine, Inc. For warranty or service assistance contact your Hurley Marine, Inc. dealer. Be sure to register your product at: http://www.hurleymarine.com/Product_Reg_Form.html

TERMS OF SALE / SHIPPING

RETURN POLICY: If you are dissatisfied with your purchase, contact us within 30 days from the date of product purchase. Products returned within 30 days of their receipt, unopened in their original packaging and otherwise in new condition will automatically be exchanged or refunded. A minimum fee of 25% of the price of the product will be charged for inspection, repacking and restocking for items not returned in their original condition. Other fees may apply depending upon the condition of the item. Products are not returnable after 30 days.

EXCHANGE / REFUND PROCEDURE:

- **All returns must have a Return Authorization number.** Contact place of purchase for a Return Authorization number.
- Properly repack the product in the original packaging and place inside a box suitable for shipping with all the original enclosures, parts, and accessories.
- The Return Authorization number must be on the box next to the shipping address.
- Return it with **original receipt** and postage pre-paid (we do not accept C.O.D.), add appropriate insurance.
- Shipping and packing fees are non-refundable.

Non-Returnable items: Inflatable boats, installed/mounted items, damaged goods, clearance/discount items, used and/or display items, electrical goods, light bulbs and special ordered items are not returnable, unless defective, and then for repair/replacement only. If the product is defective you must call Hurley Marine, Inc. within 10 days of receipt of the product.

DAMAGES GOODS: We thoroughly inspect all items prior to shipment. We suggest that you also thoroughly inspect the item(s) before accepting delivery. If damage is apparent, refuse delivery or if your parcel is left without a signature and damage is found contact the carrier immediately. Do not discard the box or any packaging materials. Most claims must be filed with the carrier within 10 days of receipt of delivery. Although we take special care to ensure the safe arrival of your merchandise, our responsibility for damage ends when the carrier accepts shipment.